

PLACEMENT REPORT

Batch 2020–24

**Training and Placement Cell
Jaypee University of Engineering and Technology, Guna**

Contact Details:

**Mr. Digvijay Singh Chauhan
Sr. TPO
Training and Placement Cell
Jaypee University of Engineering and Technology
Raghogarh, Guna (M.P.), India
Website: www.juet.ac.in
Email: digvijay.chauhan@juetguna.in, digvijay.chauhan@juet.ac.in
Mob. +91- 7000260733 Phone: +91-7544-267051**

JUET Guna Placement Report – Batch 2020–24

Placement Summary:

The 2020–24 batch of Jaypee University of Engineering and Technology (JUET), Guna has witnessed outstanding placement outcomes, affirming the institute's growing industry connections and academic excellence. With over 100 top recruiters participating, the placement season marked a substantial success across all branches. The university's commitment to excellence has translated into multi-offer scenarios, high-paying packages, and 100% placement across several streams.

Placement Statistics Overview:

Metric	Value
Eligible Students	348
Students in Higher Studies	33
Students Participating in Placements	315
Total Number of Offers	359
% of Total Offers	113.97%
Absolute Offers (1 per student)	295
% of Absolute Offers	93.65%
Average Package	₹6.56 LPA
Median Package	₹6.00 LPA
Highest Package	₹30.00 LPA (Mercary)
2nd Highest Package	₹24.73 LPA (CISCO)

Top Recruiters:

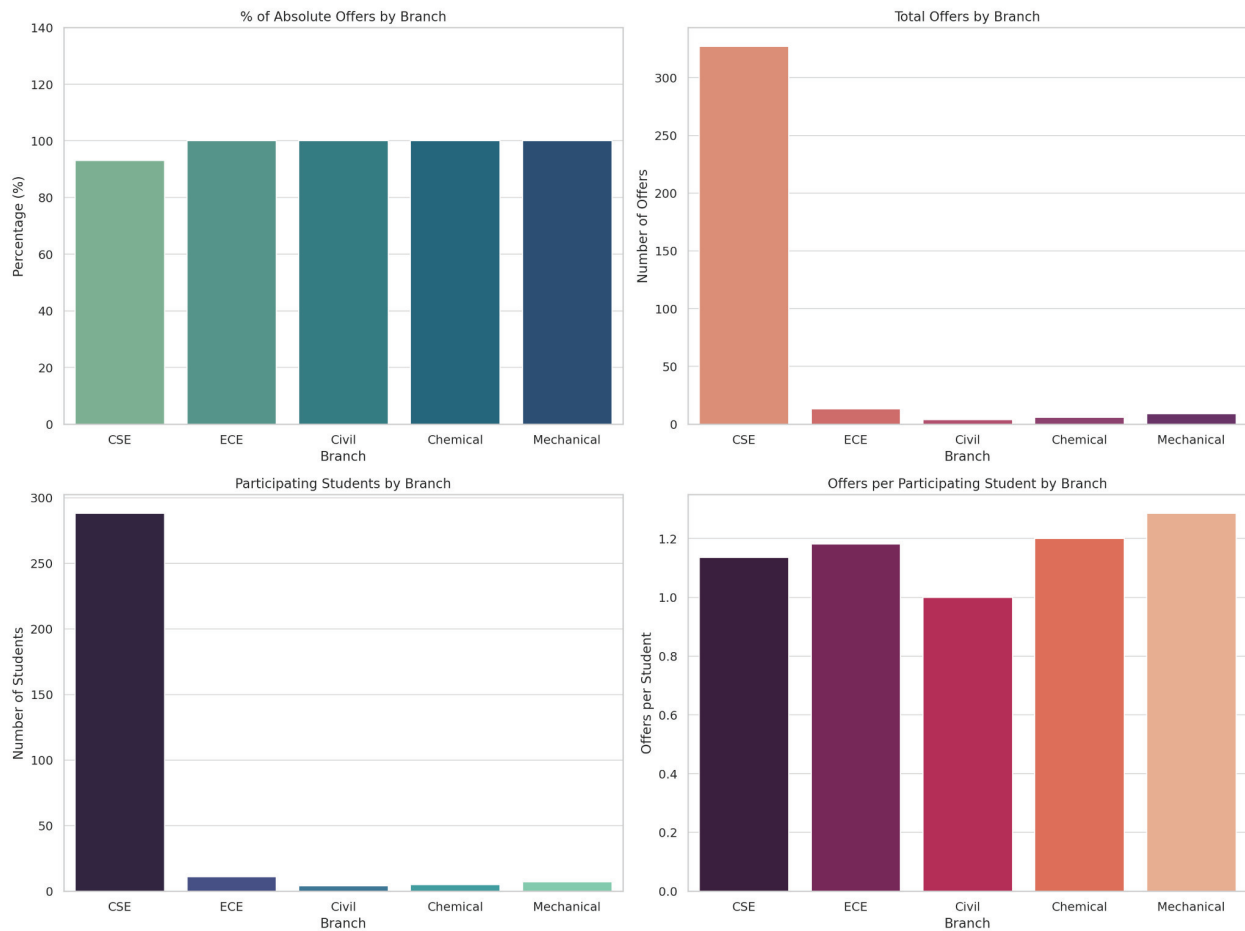
Mercary, Wayfair, CISCO, JTP, ZS Associate, Nference, DarwinBox, Ion, Gonzo Digital, Spyne, Astarix, Zopsmart, Awesome Enterprises, Recruit CRM, Zopsmart, Shipy, Quarks, Darwin Box, Rystad Energy India Pvt. Ltd., Infosys, Mahindra and Mahindra Ltd., FiServ, S&P Global, Hashedin by Deloitte, Genpact, Hero Vired, Zycus, INNOBIMB INFOTECH PVT LTD, Dacoid Digital and many more.....

Branch-wise Breakdown:

Branch	Eligible	Higher Studies	Participated	Total Offers	Absolute Offers	% Absolute Offers
CSE	315	27	288	327	268	93%
ECE	15	4	11	13	11	100%
Civil	5	1	4	4	4	100%
Chemical	5	0	5	6	5	100%
Mechanical	8	1	7	9	7	100%



Visual Insights:



1 % of Absolute Offers by Branch

Shows the proportion of students who received at least one offer: 100% in almost all branches

2 Total Offers by Branch

Each branch has showcased at least One or more than One Offer per students in total offers data






3 Participating Students by Branch

Students showing strong participation based on eligible no.s.

4 Offers per Student

Mechanical tops the chart with 1.29 offers/student, indicating multi-offers for many.

Logical Insights & Outlook:

-  **100% placement** in **ECE, Civil, Mechanical, and Chemical** branches showcases JUET's personalized placement focus.
-  **CSE alone secured 327 offers**, highlighting it as a high-potential stream.
-  The rise in **average and median packages** is a sign of strong industry confidence.
-  Multiple students received **more than one offer**, increasing flexibility and choice.
-  Recruiters from both **core sectors** and **emerging tech companies** underscore JUET's versatile curriculum and industry alignment.

Conclusion:

The 2024 placement season at JUET Guna is a testament to academic rigor, skill development, and industry relevance. With growing industry ties, a record number of recruiters, and excellent salary packages, JUET continues to shape future-ready professionals.